



FUZEDRIVE Cloning Utility

v1.0

User Guide



Contents

Introduction

System Requirements

Starting the Application

Configuration

Clone Summary

Processing

Results

Troubleshooting

- Unable to dismount the target disk
- Windows will not boot the cloned drive.
- Read failure on the source disk
- Volume Shadow copy Service (VSS) error



Legal Disclaimer

ENMOTUS, INC RESERVES THE RIGHT TO CHANGE PRODUCTS, INFORMATION AND SPECIFICATIONS WITHOUT NOTICE.

Products and specifications discussed herein are for reference purposes only. All information discussed herein is provided on an “AS IS” basis, without warranties of any kind. This document and all information discussed herein remain the sole and exclusive property of Enmotus, Inc. No license of any patent, copyright, mask work, trademark or any other intellectual property right is granted by one party to the other party under this document, by implication, estoppels or otherwise.

Copyright 2020

This material is copyrighted by Enmotus, Inc. Any unauthorized reproduction, use or disclosure of this material, or any part thereof, is strictly prohibited and is a violation under copyright law.

Trademarks

The FUZEDRIVE Logo is the trademark of Enmotus,, Inc. All other company and product names may be trademarks of the respective companies with which they are associated.



Introduction

The **FUZEDRIVE** cloning utility is designed to enable you to quickly and reliably migrate your current system and data to your new disk.

- Windows System disks and data disks can be cloned to a new disk while Windows is running using Microsoft Volume Shadow copy Service (VSS) to ensure 'point-in-time' data accuracy.
- Partitions are automatically resized to fill the cloned disk and are also aligned for optimum SSD performance and reliability.
- Cloned bootable disks are automatically updated to reflect the new disk layout and the Boot Configuration Data (BCD) is modified to reference the new the cloned disk

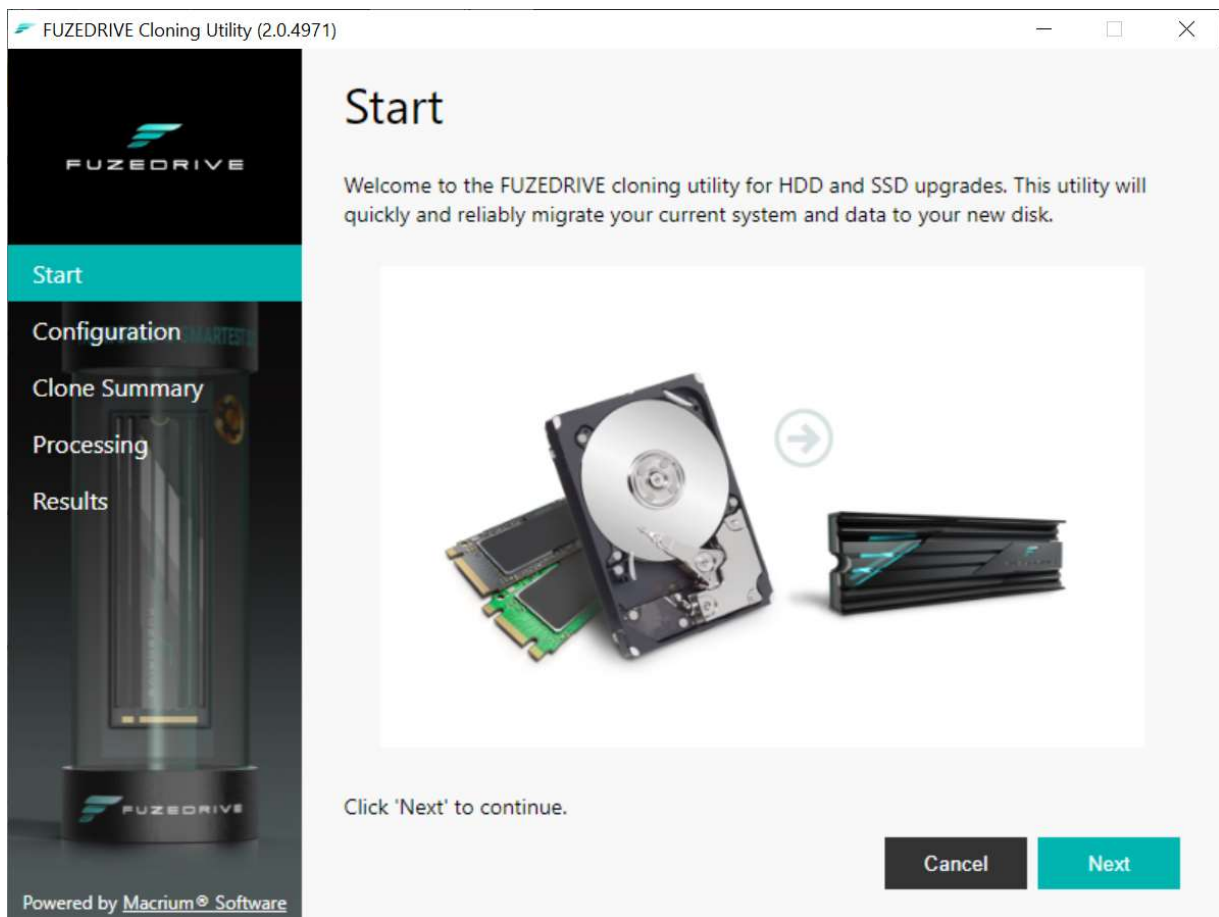


System Requirements

Operating System	Windows 7, 8, 8.1, Windows Server 2003, 2003 R2, 2008, 2008R2, 2012, 2012 R2 Windows 10
RAM	1GB Minimum
Hard Disk Space	At least 5 GB free for the application and MS Volume Shadow Copy temporary space
Disk Formats	MBR and GPT Note: Microsoft Dynamic volumes are not supported.
File Systems that support resizing	FAT16, FAT32, NTFS Note: All other file systems will retain their original size

Starting the Application

To start the application double click the downloaded executable.:FDClone.exe. There is no installation process and the application will start after unpacking and analyzing locally attached disks. The main Window will open and is shown below:



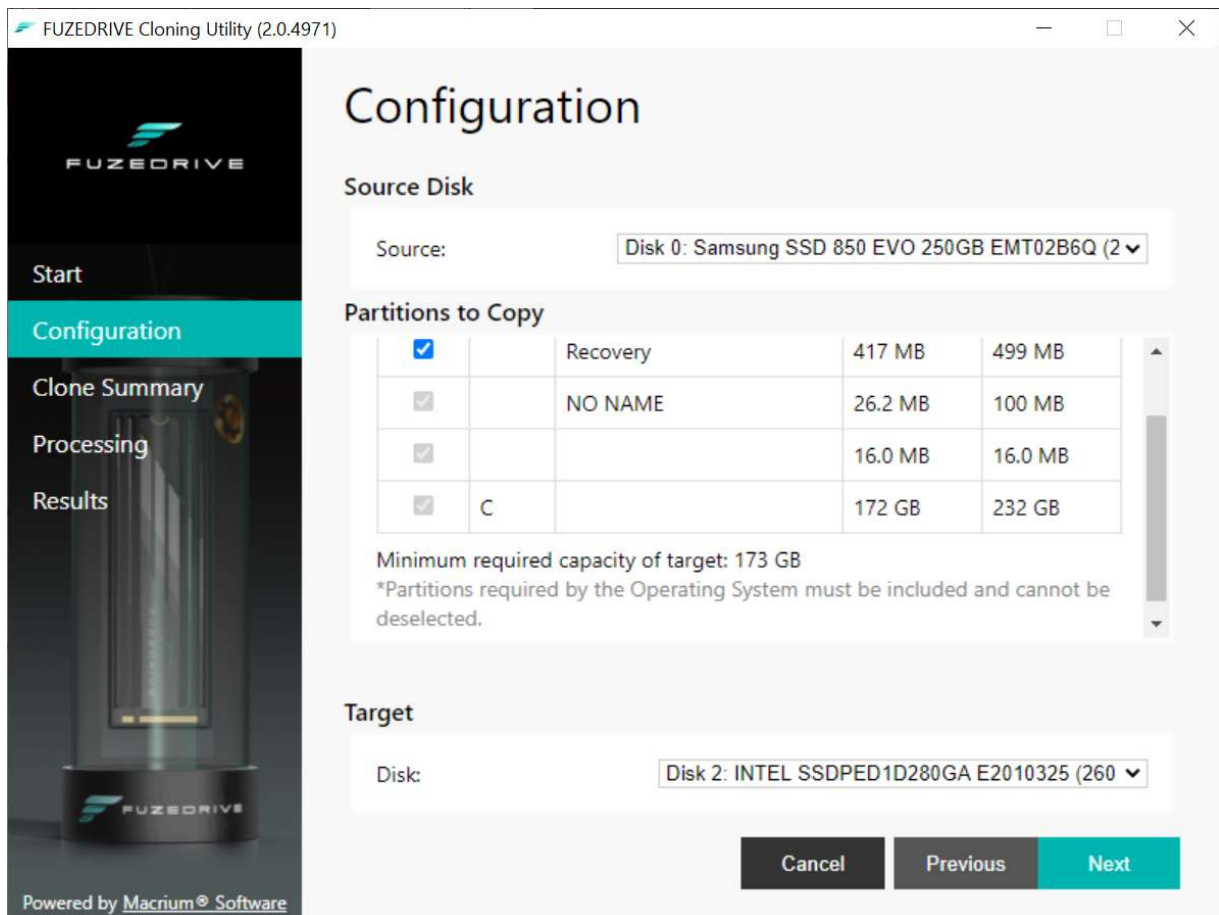
Click 'Next' to continue...

Configuration

The configuration window enables you to select the source and target disks for your clone operation. By default, your operating system disk will be selected as the source disk and the target disk will be the next attached local HDD or SSD

Note: System partitions required to boot Windows, including drive C, will be automatically selected and cannot be de-selected.

Partitions will be automatically shrunk or expanded to fill the destination disk. Please note that certain reserved system partitions will not be resized. These hidden partitions serve the same purpose regardless of the size of the disk and do not need to be either expanded or shrunk. Data partitions and drive C: will be proportionally resized according to the free space available on their respective file systems.



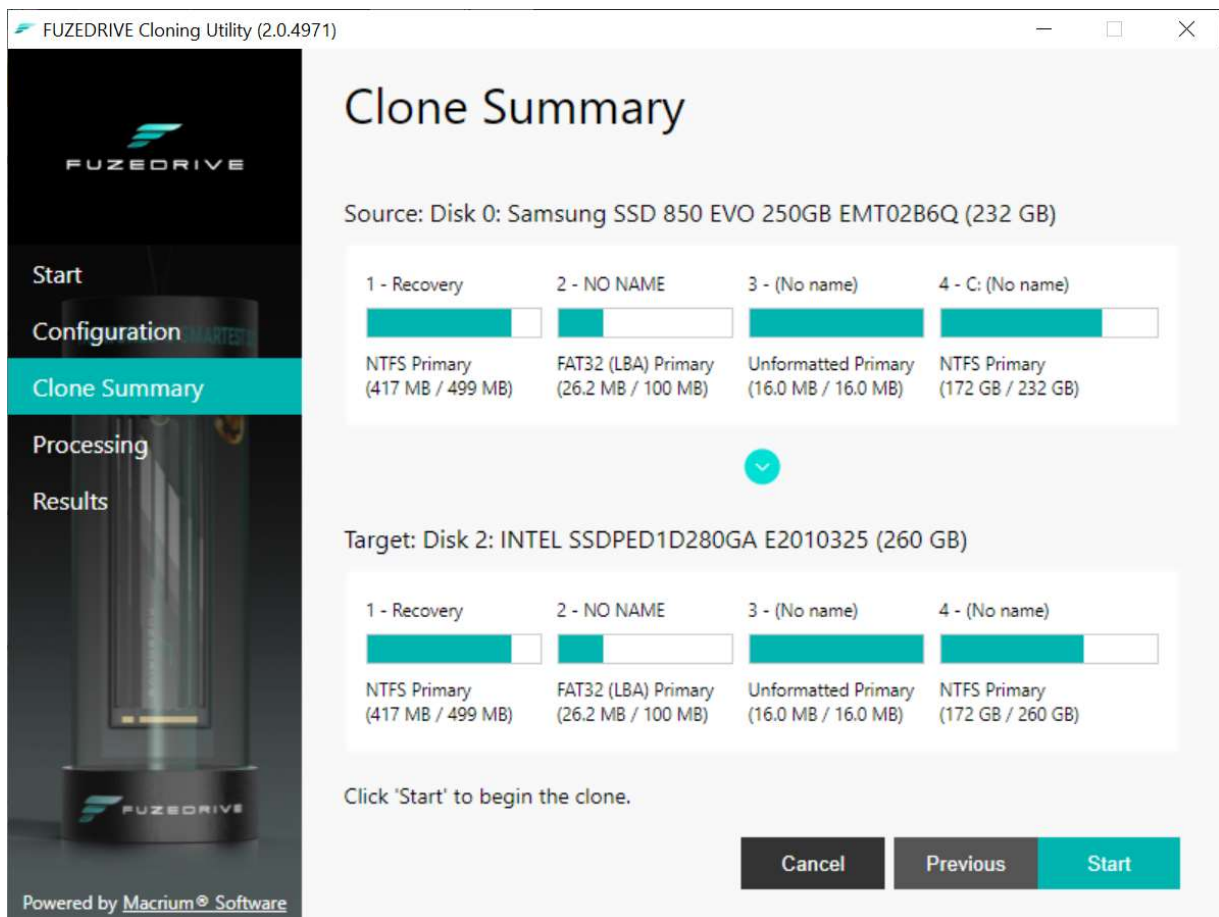
Click 'Next' to continue...

Clone Summary

The clone summary page visually indicates the source and target disk partition layouts as a result of the clone operation. To change the source disk or partition selections click the 'Previous' button.

Note: The entire target disk will be overwritten. Any data that is currently on the disk will be irrecoverably lost. If your target disk is not empty, then please ensure that any data it contains is backed up prior to starting the clone operation.

If you are satisfied that the disk and partition selections are correct, then click 'Start' to begin cloning.



FUZEDRIVE Cloning Utility (2.0.4971)

Clone Summary

Source: Disk 0: Samsung SSD 850 EVO 250GB EMT02B6Q (232 GB)

1 - Recovery	2 - NO NAME	3 - (No name)	4 - C: (No name)
NTFS Primary (417 MB / 499 MB)	FAT32 (LBA) Primary (26.2 MB / 100 MB)	Unformatted Primary (16.0 MB / 16.0 MB)	NTFS Primary (172 GB / 232 GB)

Target: Disk 2: INTEL SSDPED1D280GA E2010325 (260 GB)

1 - Recovery	2 - NO NAME	3 - (No name)	4 - (No name)
NTFS Primary (417 MB / 499 MB)	FAT32 (LBA) Primary (26.2 MB / 100 MB)	Unformatted Primary (16.0 MB / 16.0 MB)	NTFS Primary (172 GB / 260 GB)

Click 'Start' to begin the clone.

Buttons: Cancel, Previous, Start

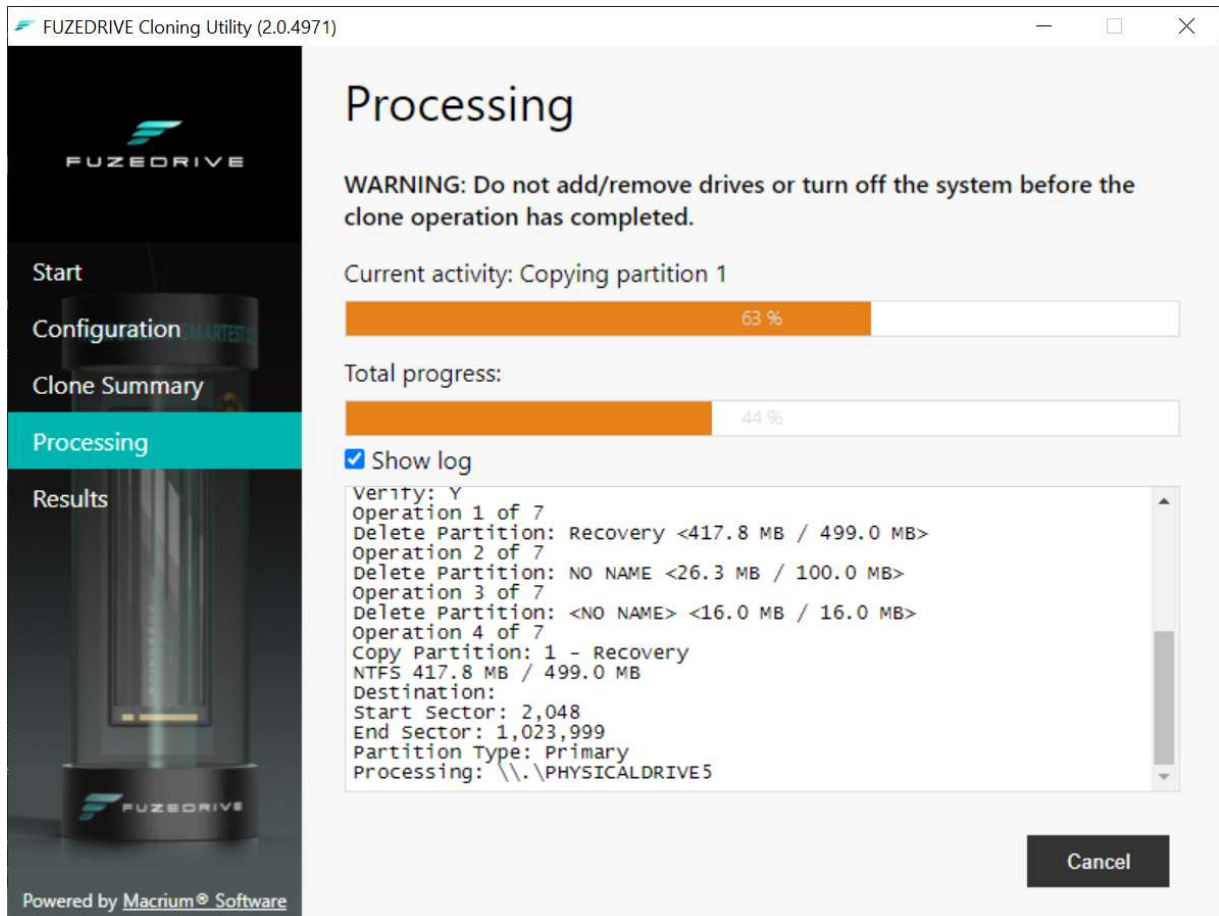
Powered by [Macrium® Software](#)

Click 'Start' to begin cloning...

Processing

During the clone operation a detailed log will be created in the output window below the progress bars. In the event of an error, the last few lines in the log will indicate the cause. Select 'Show log' to view the detailed log.

On clone completion the window will automatically advance to the next and final page.



FUZEDRIVE Cloning Utility (2.0.4971)

Processing

WARNING: Do not add/remove drives or turn off the system before the clone operation has completed.

Current activity: Copying partition 1

63 %

Total progress:

44 %

Show log

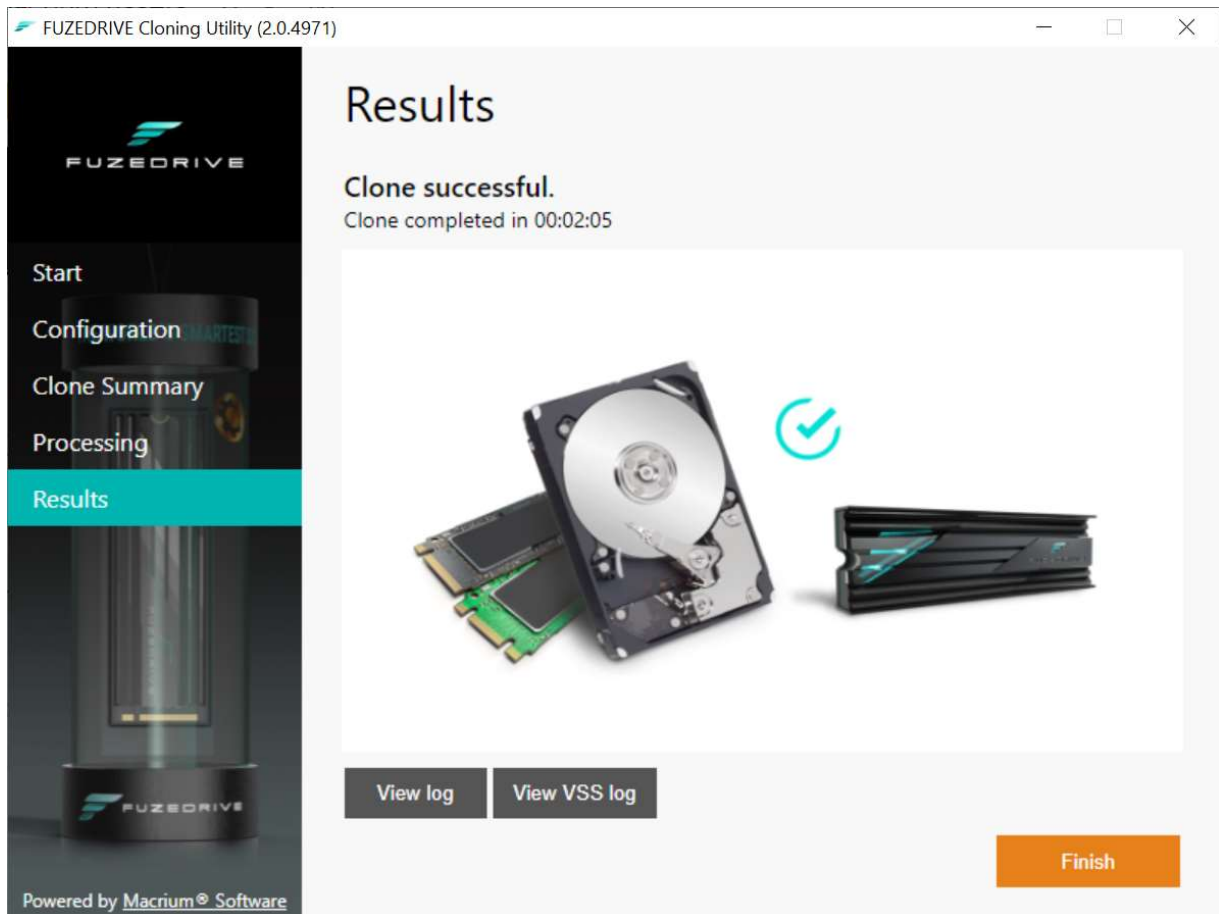
```
Verify: Y
Operation 1 of 7
Delete Partition: Recovery <417.8 MB / 499.0 MB>
Operation 2 of 7
Delete Partition: NO NAME <26.3 MB / 100.0 MB>
Operation 3 of 7
Delete Partition: <NO NAME> <16.0 MB / 16.0 MB>
Operation 4 of 7
Copy Partition: 1 - Recovery
NTFS 417.8 MB / 499.0 MB
Destination:
Start Sector: 2,048
End Sector: 1,023,999
Partition Type: Primary
Processing: \\.\PHYSICALDRIVE5
```

Cancel

Powered by Macrium® Software

Results

After a successful clone, your system will be transferred to your cloned disk and Windows will now be configured to boot from the clone. Simply replace your source disk with your cloned disk by connecting it to the same SATA port on your PC's motherboard.

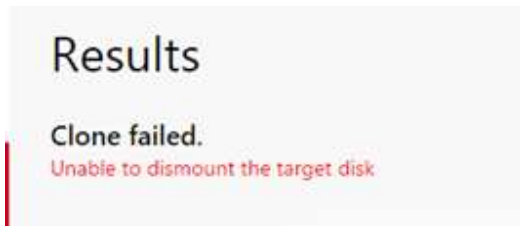


In the event of a failure, the two log buttons 'View log' and 'View VSS log' will provide detailed troubleshooting information. The last few lines of the log files will contain error codes to help track down the cause of the problem.

Troubleshooting

Unable to dismount the target disk

The clone fails and you receive the following error on the results page:



The target disk cannot be locked and overwritten. You will receive this error if you attempt to overwrite your live Windows system disk or any other disk that is currently locked by another application. Please ensure that the clone target disk is not in use by Windows.

Windows will not boot the cloned drive.

Make sure that your cloned drive is attached to the same SATA port as the original source disk and leave the original source disk disconnected until the cloned disk successfully boots. If you continue to have problems, then it may be necessary to run the Windows Start-up Repair utility provided with your Windows installation DVD.

Read failure on the source disk

Run the Microsoft utility 'chkdsk' on the source drive and try the clone again after completion:

- Click 'Start' > 'All Programs' > 'Accessories' then click 'Command Prompt'. Note: In Windows 7/8/10, you need to start the command prompt with elevated privileges.
- Type 'chkdsk c: /r /f' and press enter.
- 3. If you receive the message 'Would you like to schedule this volume to be checked the next time your system restarts?' press 'Y' then enter.
- 4. Reboot your PC.

Your file system will be analyzed for problems and this may take some time to complete.

Volume Shadow Copy Service (VSS) error

Make sure that the following Windows services are not disabled on your system:



Volume Shadow Copy
Microsoft Software Shadow Copy Provider

Make a note of the error number and search for a possible solution on the Internet. There are many possible VSS error codes and it is very likely that solutions have been posted to assist with your particular problem.

A small utility is available to automatically fix common VSS problems that can be downloaded from here:

32 bit - <https://updates.macrium.com/reflect/utilities/vssfix.exe>

64 bit - <https://updates.macrium.com/reflect/utilities/vssfixx64.exe>